



NWP NACIMIENTO WATER PROJECT
San Luis Obispo County Flood Control & Water Conservation District



DON'T MOVE A MUSSEL



CERTIFIED SCREENER'S REFRESHER MATERIAL

Why am I receiving this material?

Our records show that you are among the 70 people who completed the Level I Quagga Mussel Training last year for Lakes Nacimiento and San Antonio. This material has been prepared for you as a refresher on what to look for to identify high-risk vessels that may be carrying invasive mussels. Notice that there are **new program elements** for the 2011 boating season that will affect your screening activities.

Remind me about the basics of the Mussel Prevention Program.

Our lakes will never be the same if invasive mussels get established. Boaters unwittingly carrying mussels from another infested lake pose a high risk to Lakes Nacimiento and San Antonio.



Consequently, Monterey County Parks, Monterey County Water Resources Agency, and the San Luis Obispo County Flood Control & Water Conservation District have joined with private communities around Lake Nacimiento to identify and reject high-risk boats from launching.

Your role as a Certified Screener is to help your community to check boats as they approach the lake, to sign and stamp a permit for those vessels that you deem OK to launch, and to reject high-risk vessels altogether.¹

¹ Some private ramps will send questionable boats to the public ramps for Level 1 Inspection and possible rejection.

How will this year's program work?

We are shifting from a “self-certification” approach to mandatory screening/inspections this year. Things will be in full-swing for the Memorial Day weekend, Friday May 27, 2011:

- All vessels must be CLEAN, DRAIN and DRY.
CLEAN - Absent attached vegetation, dirt, debris or surface deposits including mussel shells or residue on the watercraft, trailer, outdrive or equipment that could mask the presence of attached mussels.
DRAIN - To the extent practical, all water drained from any live-well, bait-well, storage compartment, bilge area, engine compartment, floor, ballast tank, water storage and delivery system, cooler or other water area of the watercraft, trailer, engine or equipment.
DRY - No visible sign of standing water on or in the watercraft, trailer, engine or equipment.
- All vessels will be required to complete a “Vessel Screening Permit” (attached). Each ramp will keep these in stock plus the permit form can be downloaded from:
www.SLOCountyWater.org
www.mcwra.co.monterey.ca.us
www.vivaeldragon.org
- All vessels must be properly screened/inspected, permits must be signed and stamped by a certified screener, and stamped permits must be carried on the vessel. See Page 4 for how to get a stamp.
- Vessels that have been on infested lakes within the past 30 days and/or are not CLEAN, DRAIN, and DRY will be required to undergo a Level 1 Inspection.
- No vessels will be allowed to launch that have been on infested lakes within the past 10 days or fail inspection.
- A banding program is being implemented by Monterey County to make re-entry into the lake easier.

Please re-cap my role as a Certified Screener.

See the attached process flowchart for an illustration of the steps. The screening procedures are:

- 1) Ask for the completed Vessel Screening Permit and ask for permission to complete a vessel screening.
- 2) Review the form for completeness and for any red flags.
- 3) Walk around the vessel and trailer looking and feeling for any evidence that contradicts the verbal information provided. Verify a CLEAN, DRAIN, DRY condition.
- 4) Once you verify CLEAN, DRAIN, DRY and if you have not found any problems you can clear the vessel for launch, sign the form, write the date of the screening



and the date of the expiration of the form (no more than 14 days if they do not plan on leaving the resort or the community) and remind the operator to carry the form in the boat at all times on the lake. Stamp the form with the official stamp. (See information below on how to obtain a stamp).

- 5) **VESSELS REQUIRING LEVEL 1 INSPECTIONS:** (See Level 1 Inspection information on Page 4)
- A. Vessel that fails to arrive in a **CLEAN, DRAIN, DRY** condition
 - B. Vessels that fail screening
 - C. Vessels that report being on an infested lake in the past 30 days
 - D. If you locate any evidence or information that causes you reasonable concern that the vessel might be harboring an invasive species and that there is a risk of infection
 - E. **DISHONESTY:** If you have reason to believe that the operator is not being honest or has provided questionable information



Direct these vessels to the nearest Level I Inspection Station. Some private ramps will be set up to conduct Level 1 Inspections (Refer to Private Ramp Managers for location of Level 1 Inspection Stations). Others will route questionable vessels down to the public ramps for Level 1 Inspections. Yes, boaters sent to the public ramps for inspection also have to pay the launch fees.

Complete the Notice of Launch Prohibition form (attached) and follow the Contact information on that form.

- 6) **CHECK FOR INTACT BAND:** This year, the public ramps will offer to attach a band to boats as they exit the lake to ease re-entry. They are day-glow pink in color, have “MONTEREY COUNTY” imprinted on them, and look like this:

If you find a band intact and it has not been altered or broken, sign and **STAMP** Vessel Screening Permit as-appropriate and clear for launch.

- 7) **REJECTION OF VESSELS:**
- A. On infested lakes within the past 10 days. Boats will be allowed to complete a Level 1 Inspection after the 10 days has expired.
 - B. Boats that fail Level 1 Inspection. Perhaps direct boaters to the boat rental locations at the Nacimiento Marina (800) 323-3839, (805) 238-1056, or (805) 238-0786.



Who do I contact for questions or to report invasive species or unlawful behavior?

IF YOU SUSPECT YOU HAVE FOUND QUAGGA OR ZEBRA MUSSELS, Call for a Park Ranger at (805) 472-2311.

ANYTIME YOU REJECT A BOAT FROM LAUNCHING, provide vessel operator the “Notice of Launch Prohibition” form (attached).

FOR OTHER SCREENING QUESTIONS, refer to the contact information on Page 5.

IF BOATERS LAUNCH WITHOUT PERMISSION, OR FOR ANY OTHER UNLAWFUL BEHAVIOR, call a Park Ranger at (805) 472-2311.

Remind me of what is involved in a Level 1 Inspection.

If you are assisting your community with more in-depth Level 1 Inspections, we recommend that you review the Don't Move a Mussel video. It is two parts.

Part 1:http://100thmeridian.org/Video/DMAM2008_WM.asp (30 minutes)

Part 2:http://100thmeridian.org/Video/DMAMP2_2008_WM.asp (17 minutes)

How do I Renew Permits?

Beginning in 2011, Vessel Screening Permits will expire after 14 days. You are likely to be asked to sign and stamp renewals – **boats need not be removed from the water** for you to renew a Vessel Screening Permit. Verify Vessel Screening Permit has been completed by the vessel operator. Ask to see old Vessel Screening Permits and collect those that have them from vessel operators.

How do I get a STAMP to OK people to launch?

Vessel Screening Permits require not only your signature as the certified screener, but also an official stamp as well. Boaters must carry that SIGNED AND STAMPED Vessel Screening Permit with them and renew it every 14 days, or run the risk of being fined up to \$2,000. As a Certified Screener, you will use an official stamp to signify your clearance to launch. Issuance of official stamps to Certified Screeners is coordinated through the Ramp Coordinators as follows:

- Heritage Ranch HOA - Martin Rowley
- Oak Shores - Dennis Javens
- Cal Shasta - Phil Humfrey
- South Shore Village - Deb Kopack
- Tri Counties Club - Eric Gamble
- Running Deer Ranch - Chuck Enterline
- Rancho del Lago - Russ Johnson
- Laguna Vista Boat Club - Bill Capps

For other lakeside communities and property owners, certified screeners may contact the following to obtain a stamp:

Robin Dickerson
(661) 831-8782 Ext. 217
(661) 364-5523 (cell)
rdickerson@tjcross.com

Carolyn Berg
(805) 781-5536

cberg@co.slo.ca.us

Got more questions?

Feel free to give us a call:

Robin Dickerson
(661) 831-8782 Ext. 217
(661) 364-5523 (cell)
rdickerson@tjcross.com

Carolyn Berg
(805) 781-5536

cberg@co.slo.ca.us

Christine Halley
(661) 831-8782 x195
cmhalley@tjcross.com

Thank you for your vital role in keeping Lakes Nacimiento and San Antonio free from invasive mussels!

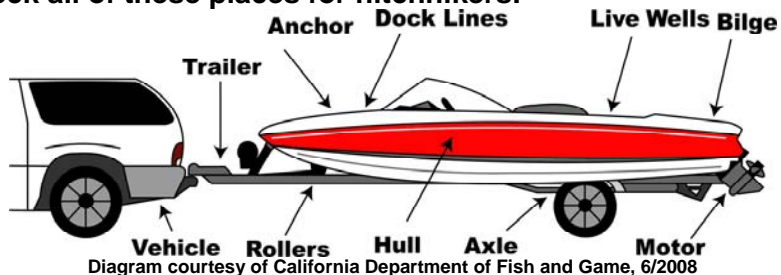
ONLY BOATS CARRYING STAMPED AND SIGNED PERMITS WILL BE ALLOWED ON LAKES NACIMIENTO AND SAN ANTONIO

Fortunately, local lakes are zebra and quagga mussel FREE! Only YOU can prevent a mussel infestation by keeping your boat **CLEAN, DRAIN, and DRY.**

Zebra and quagga mussels have the potential to:

- Disrupt the food chain and fishing
- Foul facilities like docks, ramps and waterlines
- Encrust boats and clog engines
- Litter beaches with sharp, smelly shells

Check all of these places for hitchhikers:



Before launching your watercraft make sure your vessel:

- IS CLEANED, DRAINED AND DRY**
- HAS NOT BEEN ON AN INFESTED LAKE IN THE LAST 30 DAYS (See attached map for infested lakes)**
- YOUR VESSEL HAS BEEN SCREENED/INSPECTED AND YOUR PERMIT HAS BEEN STAMPED AND SIGNED BY A CERTIFIED SCREENER**

-- FOR OFFICIAL USE ONLY --

Signature _____

Ramp _____

Date of Screening/Inspection _____

Expiration Date of Permit _____

AFFIX SEAL HERE

VESSEL SCREENING PERMIT

DO NOT LAUNCH POTENTIALLY INFESTED VESSELS

Read and accurately complete this PERMIT.
Return permit to the entry gate or certified screener upon departure.

Notice: It is unlawful (CA Fish & Game Code Sections 2300- 2302 and SLO County Code Chapter 11.20.120) to possess, import, ship, or transport in the state, or place, plant, or cause to be placed or planted in any water within the state, zebra or quagga mussels.

Registration Number or CF# _____

Date vessel was last used: ____/____/____

On what body of water was this vessel last used?

Check all boxes that apply and follow the instructions

- My vessel has an intact "band" from its last launch onto Lake Nacimiento or San Antonio, it has not been launched since the band was placed**
COMPLETE THIS FORM & WAIT FOR CERTIFIED SCREENER TO REMOVE BAND
- My vessel is CLEAN, DRAIN and DRY**
REQUIRES SCREENING
- I am planning on launching my boat several days during this trip**
Please indicate the last date you will have vessel on the water (14 day maximum)
_____ Vessel may not leave the resort or community to qualify
- My vessel has been on an infested lake within the past 30 days (See attached map)**
REQUIRES INSPECTION

By signing this permit, I certify that the following conditions have been met:

1. I have been completely truthful and accurate in completing this form
2. My vessel is CLEAN, DRAIN, and DRY.
3. My vessel has been properly screened/inspected prior to launch.
4. I understand that providing inaccurate or incomplete information on this form may result in a citation or arrest and a fine up to \$2,000.

Boater's Signature _____

Print Name _____

Date _____

Carry completed permit signed and stamped by the certified screener on your vessel while on the water and have it ready to present to a peace officer upon request. Failure to have a completed document on your vessel may result in \$2,000 citation.



DON'T MOVE A MUSSEL

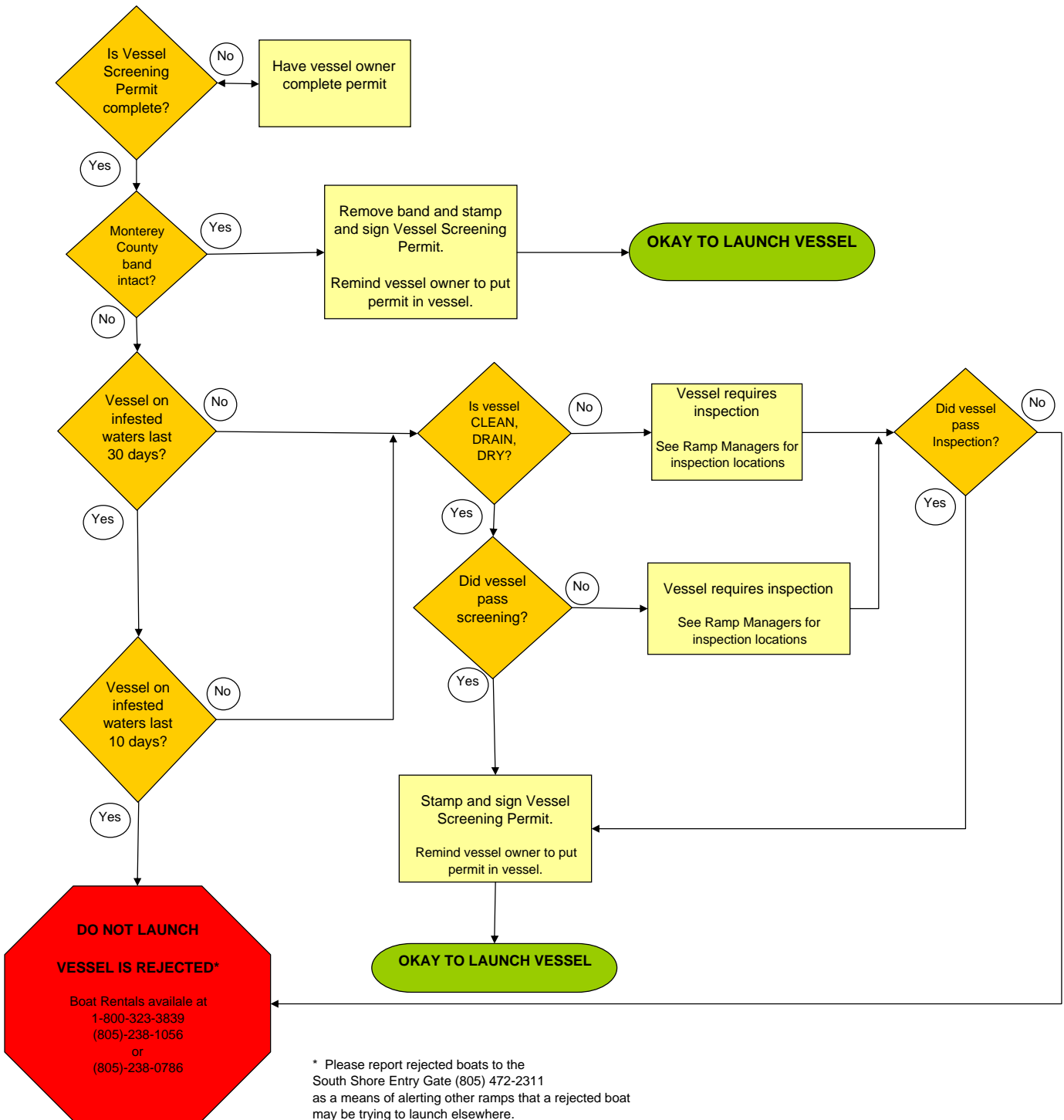


Mussel-Infested California Lakes as of April 2011



**Been on Any of These Lakes in the Last 10 Days? ... DON'T Launch!
 Last 30 Days? ... MUST Pass Inspection Before You Launch!**

LAKE NACIMIENTO CERTIFIED SCREENER'S PROCESS FLOWCHART BOATS THAT ARE LAUNCHING





NOTICE OF LAUNCH PROHIBITION LAKE NACIMIENTO AND LAKE SAN ANTONIO



CF# _____ Vessel Description _____

Date ___/___/___ Screener _____ Location _____

Attention vessel owner / operator, your vessel has been evaluated and found to be an unacceptable risk for invasive species. Do NOT launch your vessel until you correct the area/s of concern and/or wait the indicated quarantine time.

- CLEAN- Your vessel is not clean and free of all material that may harbor invasive species. You must remove the material and properly dispose of the material. Once the above steps have been completed you must submit to re- screening Inspection at a designated inspection station prior to launch.
- DRAINED- Your vessel plug is in place and there may be water retained in your vessel. You must remove your vessel from the lake shore and from the shore of any river or stream prior to removal of the drain plug and any water. Once the above steps have been completed you must submit to re- screening Inspection at a designated inspection station prior to launch.
- DRY- Your vessel is not in a dry condition. You must remove your vessel from the lake shore and from the shore of any river or stream prior to removal of any surface or collected water. Once the above steps have been completed you must submit to re- screening Inspection at a designated inspection station prior to launch.
- CONTACT with an infested body of water in the last 30 days- Your vessel is suspected to have been in contact with an infested body of water in the last 30 days. You must submit and pass a Level 1 inspection at a designated inspection station prior to launch.
- OTHER- _____

You must submit to re- screening Inspection at a designated inspection station prior to launch.

- QUARANTINE- Your vessel may not launch on Lake Nacimiento or Lake San Antonio until at least ___ days from today.

Failure to follow the above lawful direction may result in criminal citation and/or civil liability to you as the vessel owner or operator. Thank you in advance for helping to prevent the spread of aquatic invaders into our precious resource.

For more information, please visit any of our web sites:
Monterey County Water Resources Agency www.mcwra.co.monterey.ca.us
or Parks Department www.co.monterey.ca.us/parks
or San Luis Obispo County www.SLOCountyWater.org

